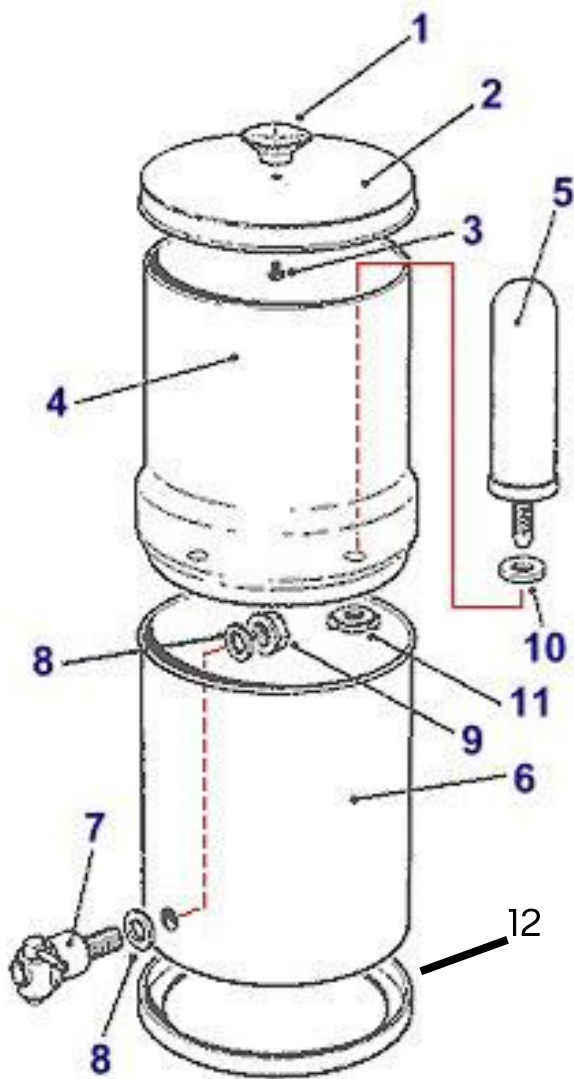


USER MANUAL OF THE WATER PURIFIER



1. Lid knob
2. Lid
3. Lid knob screw
4. Upper tank
5. Filter
6. Lower tank
7. Tap
8. Tap washers
9. Tap nut
10. Sealing gasket
11. Fixing nut
12. Stability seal

ASSEMBLY INSTRUCTIONS OF THE WATER PURIFIER

Caution, perfect hygiene is very important. To avoid any contamination of your water purifier, make sure to wash your hands thoroughly and clean **all the different parts with clean water before assembling, paying special attention to both tanks.**

1

Unpack the parts and filtering elements. Check that the set is complete using the list available on page 1.

2

Place the knob (1) on the lid (2) by inserting the screw (3) through the lid hole and screw the knob on top.

Tighten by hand.

3

Place the sealing gasket (10) on the threaded part of the filter (5).

4

Place the filter (5) with its sealing gasket inside the upper tank (4).

5

Secure the filter by screwing the fixing nut onto the threaded support. Repeat steps 3, 4 and 5 to install all the filters.

6

For systems with more holes than filtering elements (expandable systems), place the tank plugs in the empty holes.

7

Place the stainless steel washer, then the rubber gasket (8) on the threaded part of the tap (7).

8

Insert the tap (7) into the hole of the lower chamber (6). Place the second gasket (8) with its stainless steel washer inside and secure them with the tap nut (9). Tighten well and only by hand without forcing too much.

9

Place the upper tank (4) on the lower tank (6) and place the lid (2).

10

The stability seal (12) is installed under the lower tank.

INSTALLATION OF A NEW GRAVITY WATER FILTER

1

Remove the filter from its packaging and place the rubber sealing gasket on its thread.

2

Insert the filter with its sealing gasket into the upper tank and secure it using the supplied fixing nut. Be careful not to overtighten the nut.

3

Completely fill the upper chamber with water.

4

Discard this filtered water by completely emptying the lower compartment. Repeat this action 2 to 3 times. The filter is now ready to use.

Notes

For filters containing charcoal, it is normal to see a dark deposit in the water when the filter is installed for the first time and the water passes through it. This deposit will disappear once the filter has been rinsed (as described

in the notes above at points 3 and 4).

A period of up to 45 minutes may be necessary for the filter to fully soak in order to reach maximum flow rate. This duration may vary depending on the filtered water.

To discover this product and its installation on video,
visit the Pure Filters YouTube channel



https://www.youtube.com/@Pure_Filters_

RINSING PROTOCOL FOR COLDSTREAM FTO+ FILTERS

To guarantee tasteless water and eliminate any manufacturing residue (such as ceramic particles), follow this detailed protocol:

Rinsing FTO+ filters before installation

Initial preparation

- Rinse each filter under a stream of cold water for 2 minutes.
- Use a soft dishwashing sponge or a slightly abrasive microfiber to gently clean the outer surface of the filters.
This removes any residue without damaging the ceramic.

Filter installation

- Carefully screw the filters into the upper tank of your system.
- Make sure the silicone gaskets are properly positioned to prevent any leaks.

Rinsing the complete system

First filtration cycles

- Fill the upper tank with clean water.
- Let the water fully filter into the lower tank.
- Important: Empty this water after each cycle, as it may contain particles from the filter manufacturing process.
These particles are harmless to health.

Recommended number of cycles

- Repeat this process for 2 to 3 complete cycles.
This ensures that all manufacturing residues are eliminated.

TANK CLEANING

Upper and lower tanks

- Carefully clean the tanks with a soft sponge or a slightly abrasive microfiber, and warm soapy water.
- Rinse the tanks thoroughly to remove any soap traces or residue.

Cleaning frequency

- Clean the tanks at least once a month or more frequently if you notice deposits or residue.

Important note on ceramic residue

- The ceramic residues observed during the first filtration cycles are not harmful to health.
- These inert particles, from the filter manufacturing process, are completely safe for human consumption.

Additional information

- This protocol effectively eliminates the ceramic taste or any filter manufacturing residue.
- Once these steps are completed, your filtered water will be clean, with no taste or residue.

EXTENDING THE LIFESPAN OF THE WATER FILTER

If, after several months of use, the flow rate decreases, it is possible to extend the lifespan of the filter and improve the flow rate so that it regains its initial performance.

1

Remove the filter from its housing and carefully clean the outer surface of the filter using a clean scouring sponge, without cleaning products, under cold water.

2

Reassemble the filter as indicated on page 3.

Notes

Always wash your hands carefully before and after cleaning the filter. We recommend replacing the filter every 6 months.

The Pure Filters team thanks you for your purchase and your trust. If you have any questions about use or maintenance, please do not hesitate to contact us or reach out to your Pure Filters advisor.



Ch. de la Meunière 10, 1008 Prilly / VD, Switzerland

www.nicewater.ch

Landline phone : [SW] +41 21 552 06 00

[EU] +33 1 89 70 87 26